

LaVogue Square Apartments

225 Merton, Detroit, Mi 48203

(313) 865-3000

Designed by architect Cyril Schley and built in 1929, the elaborate façade of this eclectic revival building is adorned with spiral columns, corbelled brickwork and green clay tile accents.

LaVogue Square is located near Woodward Avenue and stands as queen of Palmer Park. Shelborne Development and Malino Construction have rehabilitated LaVogue into 41 modern apartment homes laden with high-quality amenities including granite counter tops, stainless appliances, hardwood floors, ceramic tile baths and central air conditioning.



Bedroom



Dining Area



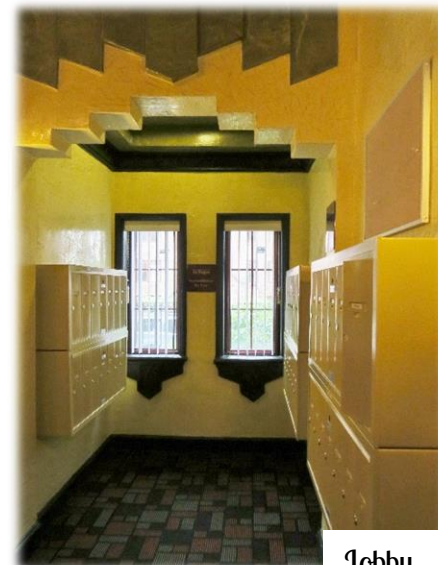
Bathroom



Kitchen



Lobby



Lobby